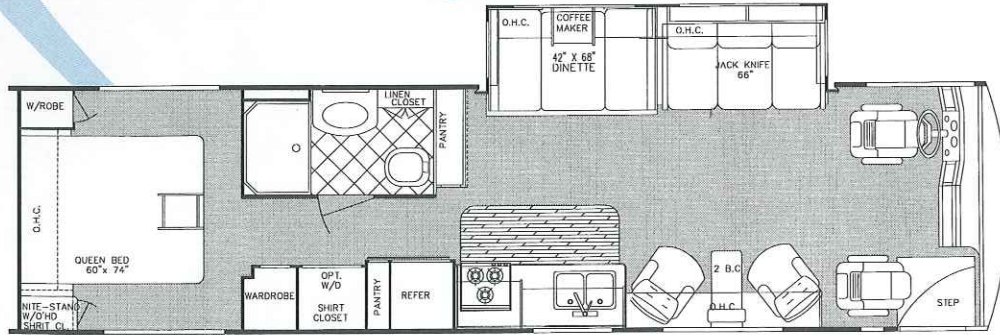


7/99

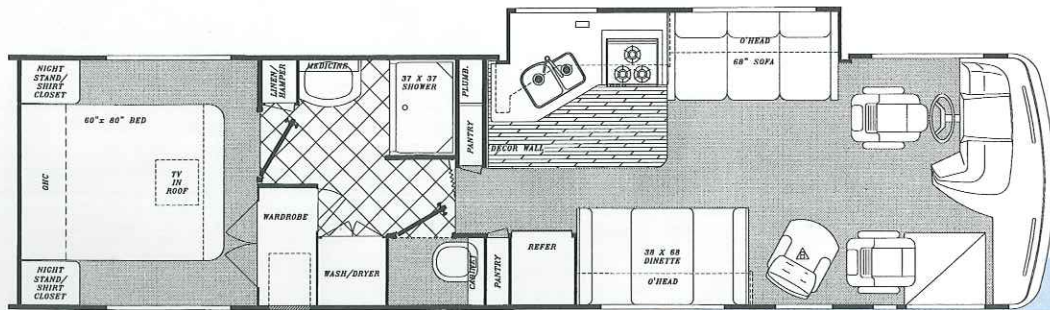
Sun Voyager INDEPENDENCE

GULF STREAM COACH, INC.

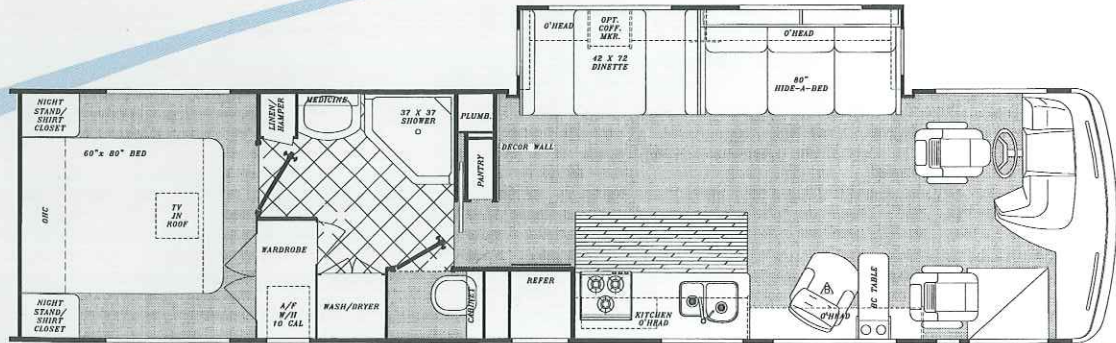
2000 DIESEL MODELS



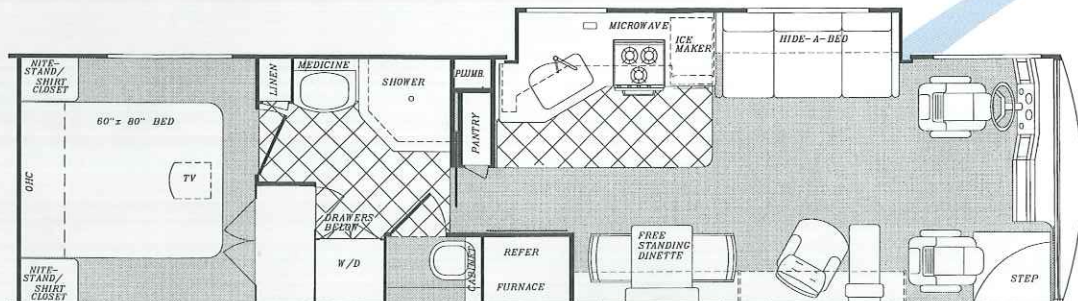
Model 8342 (Approx. 34'-8", 101" wide)



Model 8345 (Approx. 34'-8", 101" wide)



Model 8352 (Approx. 36'-10", 101" wide)



Model 8362 (Approx. 36'-10", 101" wide)

Sun Voyager INDEPENDENCE

Interior & Decor

- Natural Oak Cabinet Doors
- 22" Metal Drawer Guides w/Nylon Rollers.
- Silverware Drawer and Drawer Front
- Residential Sized Cabinets and Overheads
- Windshield Privacy Drape
- Deluxe Furniture
- 3-Way Driver & Passenger Seats
- Deluxe Carpet w/Pad
- Coordinated Bedspread & Pillow Shams
- Lighted Closets
- Decorator Mirror (where available)
- Generous Overhead Storage
- Day/Night Pleated Shades

Exterior & Construction

- **"Cradle of Strength" Construction:**
 - Welded Steel Sub-Floor Truss System
 - 1-1/2" Tubular Metal Cage Construction on Sidewalls & Roof
 - Insulated Floors w/Virtually Seamless Weyerhaeuser Structurwood Decking
 - Vacuum-Bond Laminated 2" Thick Sidewall Construction w/Seamless Mende Fiberglass
- High-Density Block Foam Insulation Throughout Sidewalls, Roof & Floor
- Radiused Laminated Rubber Roof w/Tubular Metal Rafters
- Molded Roof Brick Insulation in Roof, Surrounding Ducted Roof A/C Vents
- Heated & Fully Enclosed Holding Tanks
- Automotive-Style Bumpers
- Deluxe Outside Mirrors
- Generous Pass-Through Basement Storage,
- Hinged Exterior Storage Doors
- Tri-Mark Exterior Storage Compartment Latches & Locks
- Fully Welded Steel Firewall
- Below Floor Storage Area's are Constructed of Galvanized Steel (not plywood or plastic)
- Deluxe Exterior Paint Graphics w/Tape Accent

Electrical Systems

- Easy-Access Dual Battery System
- 12-volt, 45-Amp Converter
- Electric Supply Cord
- Electric Overload Protection
- Automotive-Type, Color-Coded Wiring
- Lighted Entry & Aisle Lights
- Directional Reading/Map Lights
- Battery Disconnect
- Pre-Wire for VCR

Visit Our Web Site at:

WWW.GULFSTREAMCOACH.COM

1-800-765-8787, ext. 3288



P.O. Box 1005 • Nappanee, IN 46550

DIESEL MODELS	8342	8345	8352	8362
SPARTAN CHASSIS:	Alpine ST	Alpine ST	Alpine GT	Alpine GT
ENGINE (HP)	275	275	275	275
Wheelbase	208"	208"	234"	234"
GVWR (lbs.)	23,000	23,000	25,750	25,750
Front Gross Axle Weight Rating	8,000	8,000	9,000	9,000
Rear Gross Axle Weight Rating	15,000	15,000	16,750	16,750
*Exterior Length	34'-8"	34'-8"	36'-10"	36'-10"
*Exterior Height with A/C	11'-11"	11'-11"	11'-11"	11'-11"
Exterior Width	101"	101"	101"	101"
Interior Height	80"	80"	80"	80"
Interior Width	97"	97"	97"	97"
*FreshWater Tank (Gal.)	90	50	90	100
*Grey Holding Tank (Gal.)	50	50	50	50
*Black Holding Tank (Gal.)	50	50	50	50
Water Heater w/DSI	10 gal.	10 gal.	10 gal.	10 gal.
LP Gas Tank (lbs.)	115	115	115	115
Fuel Tank (Gal.)	100	100	100	100
Furnace (BTU's)	40,000	40,000	40,000	40,000

* Approximate and subject to change without notice.

For further information, contact your local dealer or Gulf Stream. Gulf Stream Coach, Inc. reserves the right to make changes in prices, colors, materials, components and specifications and to discontinue models at any time without notice or obligation. Gulf Stream Coach, Inc. assumes no responsibility for any error in type or print reproduction of specifications or floorplans in this brochure.
TP 30M 7/99

Heating, Ventilation & A/C

- Ducted Furnace w/Elect. Ignition (40,000 BTU's)
- Pre-Wired for Ducted Roof A/C

Bath & Water

- Demand Water System
- City Water Hook-Up
- Kitchen Sink Cover
- Residential Rectangular Shower (most models)
- Mirrored Medicine Cabinet
- Super-Flow Manifold Water Dist. Sys.
- Deluxe Pedal Stool w/Sprayer
- Sky Dome Over Shower
- Glass Shower Enclosure

Chassis

- Spartan Alpine ST, 23,000 lb. GVWR Chassis w/Cummins 275 HP @ 2500 RPM, 605 ft. lb. Torque @ 1700 RPM, Turbo-Charged Rear Mounted Diesel Engine w/6-Speed Allison World Transmission Raised Rail (8342 & 8345)

- Spartan Alpine GT, 25,750 lb. GVWR Chassis w/Cummins 8.3L, 275 HP, 800 ft. lb. Torque, Turbo-Charged Rear Mounted Diesel Engine w/6-Speed Allison World Trans., Raised Rail, Exhaust Brake, 22.5" Tires (8352 & 8362)

Appliances

- 3-Burner High-Performance Range
- Lighted Power Range Hood
- Double Door, 2-Way Refrigerator

Deluxe Standard Features

- Auto Dash Air Conditioner
- Auto Cruise Control
- Stainless Steel Wheel Liners
- AM/FM Cassette w/4 Spkrs.
- Monitor Panel
- Stainless Steel Entry Handle
- Power Vent in Commode
- Converter w/Battery Charger
- Auxiliary Battery
- 19" Color TV in Front Overhead
- Carbon Monoxide Detector
- TV Antenna
- LP Gas Leak Detector
- Awning Rail
- Microwave Oven

Popular Options

- Convection Oven
- Exterior Radio/Cassette Compartment
- Wood Plank Flooring
- 6-Panel Oak Refrigerator Inlay